

Contextural Titanium Series



Contextural 2861
10-40um



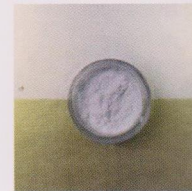
Contextural 2862
10-40um



Contextural 2863
10-40um



Contextural 2864
10-40um



Contextural 2865
10-40um



Contextural 2211
10-60um



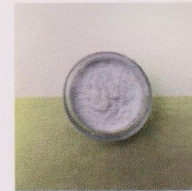
Contextural 2212
10-60um



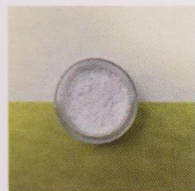
Contextural 2213
10-60um



Contextural 2214
10-60um



Contextural 2215
10-60um



Contextural 2215A
10-60um



Contextural 2411
10-60um



Contextural 2412
10-60um

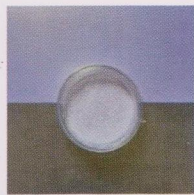


Contextural 2413
10-60um

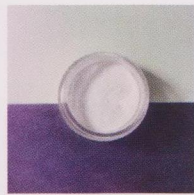


Contextural 2414
10-60um

Contextural Titanium Series



Contextural 2415
25-95um



Contextural 2811
25-95um



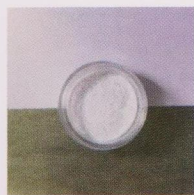
Contextural 2812
25-95um



Contextural 2813
25-95um



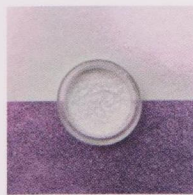
Contextural 2814
25-95um



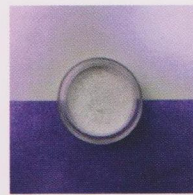
Contextural 2815
25-95um



Contextural 2880
30-150um



Contextural 2881
30-150um



Contextural 2882
30-150um



Contextural 2883
30-150um



Contextural 2885
30-150um



Contextural 2911
25-195um



Contextural 2912
25-195um



Contextural 2913
25-195um



Contextural 2914
25-195um



Contextural 2915
25-195um

Product	INCI	Particle Size
* Contextural 2861	Synthetic Fluorphlogopite+Titanium Dioxide (CI 77891) +Silica+Tin Oxide (CI 77861)	10-40µm
* Contextural 2862	Synthetic Fluorphlogopite+Titanium Dioxide (CI 77891) +Silica+Tin Oxide (CI 77861)	10-40µm
* Contextural 2863	Synthetic Fluorphlogopite+Titanium Dioxide (CI 77891) +Silica+Tin Oxide (CI 77861)	10-40µm
* Contextural 2864	Synthetic Fluorphlogopite+Titanium Dioxide (CI 77891) +Silica+Tin Oxide (CI 77861)	10-40µm
* Contextural 2865	Synthetic Fluorphlogopite+Titanium Dioxide (CI 77891) +Silica+Tin Oxide (CI 77861)	10-40µm
* Contextural 2211	Synthetic Fluorphlogopite+Titanium Dioxide (CI 77891) +Silica+Tin Oxide (CI 77861)	10-60µm
* Contextural 2212	Synthetic Fluorphlogopite+Titanium Dioxide (CI 77891) +Silica+Tin Oxide (CI 77861)	10-60µm
* Contextural 2213	Synthetic Fluorphlogopite+Titanium Dioxide (CI 77891) +Silica+Tin Oxide (CI 77861)	10-60µm
* Contextural 2214	Synthetic Fluorphlogopite+Titanium Dioxide (CI 77891) +Silica+Tin Oxide (CI 77861)	10-60µm
* Contextural 2215	Synthetic Fluorphlogopite+Titanium Dioxide (CI 77891) +Silica+Tin Oxide (CI 77861)	10-60µm
Contextural 2215A	Synthetic Fluorphlogopite+Titanium Dioxide (CI 77891) +Silica+Tin Oxide (CI 77861)	10-60µm
Contextural 2411	Synthetic Fluorphlogopite+Titanium Dioxide (CI 77891) +Silica+Tin Oxide (CI 77861)	10-60µm

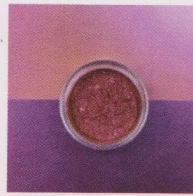
Contextural Titanium Series

Product	INCI	Particle Size
Contextural 2412	Synthetic Fluorphlogopite+Titanium Dioxide (CI 77891) +Silica+Tin Oxide (CI 77861)	10-60µm
Contextural 2413	Synthetic Fluorphlogopite+Titanium Dioxide (CI 77891) +Silica+Tin Oxide (CI 77861)	10-60µm
Contextural 2414	Synthetic Fluorphlogopite+Titanium Dioxide (CI 77891) +Silica+Tin Oxide (CI 77861)	10-60µm
* Contextural 2415	Synthetic Fluorphlogopite+Titanium Dioxide (CI 77891) +Silica+Tin Oxide (CI 77861)	10-60µm
Contextural 2811	Synthetic Fluorphlogopite + Titanium Dioxide(CI 77891) +Silica + Tin Oxide(CI 77861)	25-95µm
Contextural 2812	Synthetic Fluorphlogopite + Titanium Dioxide(CI 77891) +Silica + Tin Oxide(CI 77861)	25-95µm
Contextural 2813	Synthetic Fluorphlogopite + Titanium Dioxide(CI 77891) +Silica + Tin Oxide(CI 77861)	25-95µm
Contextural 2814	Synthetic Fluorphlogopite + Titanium Dioxide(CI 77891) +Silica + Tin Oxide(CI 77861)	25-95µm
Contextural 2815	Synthetic Fluorphlogopite + Titanium Dioxide(CI 77891) +Silica + Tin Oxide(CI 77861)	25-95µm
Contextural 2880	Synthetic Fluorphlogopite+Silica+Titanium Dioxide (CI 77891)+Tin Oxide (CI 77861)	30-150µm
Contextural 2881	Synthetic Fluorphlogopite+Silica+Titanium Dioxide (CI 77891)+Tin Oxide (CI 77861)	30-150µm
Contextural 2882	Synthetic Fluorphlogopite+Silica+Titanium Dioxide (CI 77891)+Tin Oxide (CI 77861)	30-150µm
Contextural 2883	Synthetic Fluorphlogopite+Silica+Titanium Dioxide (CI 77891)+Tin Oxide (CI 77861)	30-150µm
Contextural 2885	Synthetic Fluorphlogopite+Silica+Titanium Dioxide (CI 77891)+Tin Oxide (CI 77861)	30-150µm
Contextural 2911	Synthetic Fluorphlogopite+Titanium Dioxide(CI 77891)+Silica+Tin Oxide(CI 77861)	25-195µm
Contextural 2912	Synthetic Fluorphlogopite+Titanium Dioxide(CI 77891)+Silica+Tin Oxide(CI 77861)	25-195µm
Contextural 2913	Synthetic Fluorphlogopite+Titanium Dioxide(CI 77891)+Silica+Tin Oxide(CI 77861)	25-195µm
Contextural 2914	Synthetic Fluorphlogopite+Titanium Dioxide(CI 77891)+Silica+Tin Oxide(CI 77861)	25-195µm
Contextural 2915	Synthetic Fluorphlogopite+Titanium Dioxide(CI 77891)+Silica+Tin Oxide(CI 77861)	25-195µm

Contextural Iron Series



Contextural 2921
10-60um



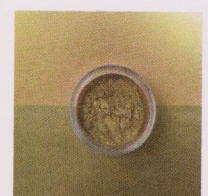
Contextural 2922
10-60um



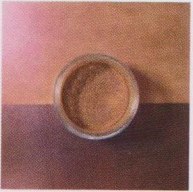
Contextural 2923
10-60um



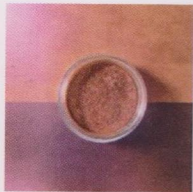
Contextural 2924
10-60um



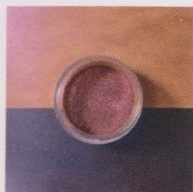
Contextural 2925
10-60um



Contextural 2621
20-80um



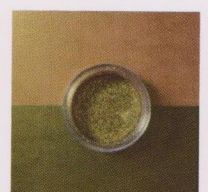
Contextural 2622
20-80um



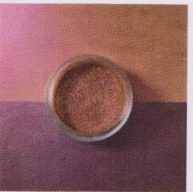
Contextural 2623
20-80um



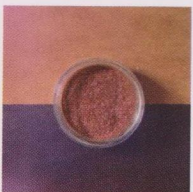
Contextural 2624
20-80um



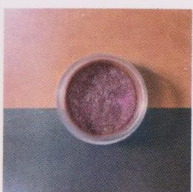
Contextural 2625
20-80um



Contextural 2521
25-95um



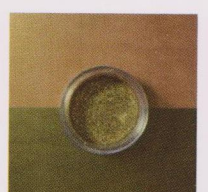
Contextural 2522
25-95um



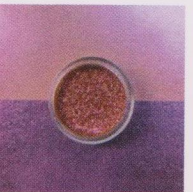
Contextural 2523
25-95um



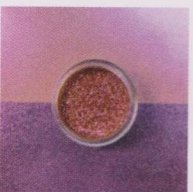
Contextural 2524
25-95um



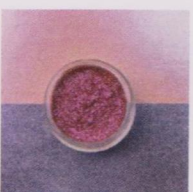
Contextural 2525
25-95um



Contextural 2981
30-150um



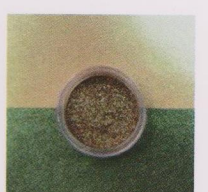
Contextural 2982
30-150um



Contextural 2983
30-150um



Contextural 2985
30-150um



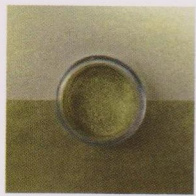
Contextural 2986
30-150um

Product	INCI	Particle Size
Contextural 2921	Synthetic Fluorphlogopite +Iron Oxides/77491 (CI 77491)+Silica	10-60µm
Contextural 2922	Synthetic Fluorphlogopite +Iron Oxides/77491 (CI 77491)+Silica	10-60µm
Contextural 2923	Synthetic Fluorphlogopite +Iron Oxides/77491 (CI 77491)+Silica	10-60µm
Contextural 2924	Synthetic Fluorphlogopite +Iron Oxides/77491 (CI 77491)+Silica	10-60µm
Contextural 2925	Synthetic Fluorphlogopite +Iron Oxides/77491 (CI 77491)+Silica	10-60µm
* Contextural 2621	Synthetic Fluorphlogopite+Silica+Iron Oxides/77491 (CI 77491)	20-80µm
* Contextural 2622	Synthetic Fluorphlogopite+Silica+Iron Oxides/77491 (CI 77491)	20-80µm
* Contextural 2623	Synthetic Fluorphlogopite+Silica+Iron Oxides/77491 (CI 77491)	20-80µm
* Contextural 2624	Synthetic Fluorphlogopite+Silica+Iron Oxides/77491 (CI 77491)	20-80µm
* Contextural 2625	Synthetic Fluorphlogopite+Silica+Iron Oxides/77491 (CI 77491)	20-80µm

Contextural Iron Series

Product	INCI	Particle Size
Contextural 2521	Synthetic Fluorphlogopite+Iron Oxides/77491 (CI 77491)+ Silica	25-95µm
Contextural 2522	Synthetic Fluorphlogopite+Iron Oxides/77491 (CI 77491)+ Silica	25-95µm
Contextural 2523	Synthetic Fluorphlogopite+Iron Oxides/77491 (CI 77491)+ Silica	25-95µm
Contextural 2524	Synthetic Fluorphlogopite+Iron Oxides/77491 (CI 77491)+ Silica	25-95µm
Contextural 2525	Synthetic Fluorphlogopite+Iron Oxides/77491 (CI 77491)+ Silica	25-95µm
Contextural 2981	Synthetic Fluorphlogopite+Silica+Iron Oxides/77491	30-150µm
Contextural 2982	Synthetic Fluorphlogopite+Silica+Iron Oxides/77491	30-150µm
Contextural 2983	Synthetic Fluorphlogopite+Silica+Iron Oxides/77491	30-150µm
Contextural 2985	Synthetic Fluorphlogopite+Silica+Iron Oxides/77491	30-150µm
Contextural 2986	Synthetic Fluorphlogopite+Silica+Iron Oxides/77491	30-150µm

Contextural Iron Titanium Series



Contextural 2330
10-60um



Contextural 2331
10-60um



Contextural 2332
10-60um



Contextural 2333
10-60um



Contextural 2334
10-60um



Contextural 2335
10-60um



Contextural 2336
10-60um



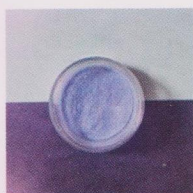
Contextural 2337
10-60um



Contextural 2958
20-100um

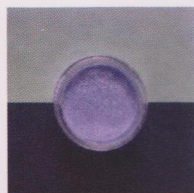
Product	INCI	Particle Size
Contextural 2330	Synthetic Fluorphlogopite+Silica+Iron Oxides/77491+Titanium Dioxide (CI 77891)+Tin Oxide (CI77861)	10-60µm
Contextural 2331	Synthetic Fluorphlogopite+Silica+Iron Oxides/77491+Titanium Dioxide (CI 77891)+Tin Oxide (CI77861)	10-60µm
Contextural 2332	Synthetic Fluorphlogopite+Silica+Iron Oxides/77491+Titanium Dioxide (CI 77891)+Tin Oxide (CI77861)	10-60µm
Contextural 2333	Synthetic Fluorphlogopite+Silica+Iron Oxides/77491+Titanium Dioxide (CI 77891)+Tin Oxide (CI77861)	10-60µm
Contextural 2334	Synthetic Fluorphlogopite+Silica+Iron Oxides/77491+Titanium Dioxide (CI 77891)+Tin Oxide (CI77861)	10-60µm
Contextural 2335	Synthetic Fluorphlogopite+Silica+Iron Oxides/77491+Titanium Dioxide (CI 77891)+Tin Oxide (CI77861)	10-60µm
Contextural 2336	Synthetic Fluorphlogopite+Silica+Iron Oxides/77491+Titanium Dioxide (CI 77891)+Tin Oxide (CI77861)	10-60µm
Contextural 2337	Synthetic Fluorphlogopite+Silica+Iron Oxides/77491+Titanium Dioxide (CI 77891)+Tin Oxide (CI77861)	10-60µm
Contextural 2958	Synthetic Fluorphlogopite +Silica+Titanium Oxide+Iron Oxides/77491 +Tin Oxide(CI 77861)	20-100µm

Contextural Ultramarine Blue Series



Contextural 2811UL

25-95um



Contextural 2812UL

25-95um



Contextural 2813UL

25-95um



Contextural 2814UL

25-95um



Contextural 2815UL

25-95um



Contextural 2862UL

25-95um

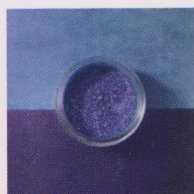


Contextural 2864UL

25-95um

Product	INCI	Particle Size
Contextural 2811UL	Synthetic Fluorphlogopite+Titanium Dioxide(CI 77891)+Tin Oxide(CI 77861) +Ultramarine (CI 77007)+Silica + Triethoxycaprylsilane	25-95µm
* Contextural 2812UL	Synthetic Fluorphlogopite+Titanium Dioxide(CI 77891)+Tin Oxide(CI 77861) +Ultramarine (CI 77007)+Silica + Triethoxycaprylsilane	25-95µm
Contextural 2813UL	Synthetic Fluorphlogopite+Titanium Dioxide(CI 77891)+Tin Oxide(CI 77861) +Ultramarine (CI 77007)+Silica + Triethoxycaprylsilane	25-95µm
Contextural 2814UL	Synthetic Fluorphlogopite+Titanium Dioxide(CI 77891)+Tin Oxide(CI 77861) +Ultramarine (CI 77007)+Silica + Triethoxycaprylsilane	25-95µm
Contextural 2815UL	Synthetic Fluorphlogopite+Titanium Dioxide(CI 77891)+Tin Oxide(CI 77861) +Ultramarine (CI 77007)+Silica + Triethoxycaprylsilane	25-95µm
Contextural 2862UL	Synthetic Fluorphlogopite+Titanium Dioxide(CI 77891)+Tin Oxide(CI 77861) +Ultramarine (CI 77007)+Silica + Triethoxycaprylsilane	25-95µm
Contextural 2864UL	Synthetic Fluorphlogopite+Titanium Dioxide(CI 77891)+Tin Oxide(CI 77861) +Ultramarine (CI 77007)+Silica + Triethoxycaprylsilane	25-95µm

Contextural Iron Blue Coloring Series



Contextural 2841

25-95um



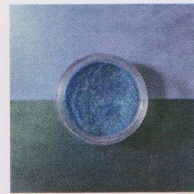
Contextural 2842

25-95um



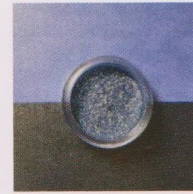
Contextural 2843

25-95um



Contextural 2844

25-95um

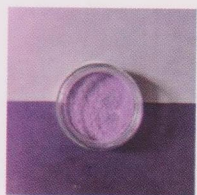


Contextural 2845

25-95um

Product	INCI	Particle Size
Contextural 2841	Synthetic Fluorphlogopite +Titanium Dioxide(CI 77891) + Silica+Tin Oxide(CI 77861) + Ferric Ferrocyanide(CI 77510)	25-95µm
Contextural 2842	Synthetic Fluorphlogopite +Titanium Dioxide(CI 77891) + Silica+Tin Oxide(CI 77861) + Ferric Ferrocyanide(CI 77510)	25-95µm
Contextural 2843	Synthetic Fluorphlogopite +Titanium Dioxide(CI 77891) + Silica+Tin Oxide(CI 77861) + Ferric Ferrocyanide(CI 77510)	25-95µm
Contextural 2844	Synthetic Fluorphlogopite +Titanium Dioxide(CI 77891) + Silica+Tin Oxide(CI 77861) + Ferric Ferrocyanide(CI 77510)	25-95µm
Contextural 2845	Synthetic Fluorphlogopite +Titanium Dioxide(CI 77891) + Silica+Tin Oxide(CI 77861) + Ferric Ferrocyanide(CI 77510)	25-95µm

Contextural Manganese Violet Series



Contextural 2411MV10
10-60um



Contextural 2414MV10
10-60um



Contextural 2811MV10
25-95um



Contextural 2813MV10
25-95um



Contextural 2814MV10
25-95um



Contextural 2815MV10
25-95um

Product	INCI	Particle Size
Contextural 2411MV10	Synthetic Fluorophlogopite+ Titanium Dioxide(CI 77891)+ Tin Oxide(CI 77861) +Manganese Violet(CI 77742)+Silica + Triethoxycaprylsilane	10-60µm
Contextural 2414MV10	Synthetic Fluorophlogopite+ Titanium Dioxide(CI 77891)+ Tin Oxide(CI 77861) +Manganese Violet(CI 77742)+Silica + Triethoxycaprylsilane	10-60µm
Contextural 2811MV10	Synthetic Fluorophlogopite+ Titanium Dioxide(CI 77891)+ Tin Oxide(CI 77861) +Manganese Violet(CI 77742)+Silica + Triethoxycaprylsilane	25-95µm
Contextural 2813MV10	Synthetic Fluorophlogopite+ Titanium Dioxide(CI 77891)+ Tin Oxide(CI 77861) +Manganese Violet(CI 77742)+Silica + Triethoxycaprylsilane	25-95µm
Contextural 2814MV10	Synthetic Fluorophlogopite+ Titanium Dioxide(CI 77891)+ Tin Oxide(CI 77861) +Manganese Violet(CI 77742)+Silica + Triethoxycaprylsilane	25-95µm
Contextural 2815MV10	Synthetic Fluorophlogopite+ Titanium Dioxide(CI 77891)+ Tin Oxide(CI 77861) +Manganese Violet(CI 77742)+Silica + Triethoxycaprylsilane	25-95µm

Contextural Iron Black Series



Contextural 2861FeC+
10-40um



Contextural 2813FeC+
25-95um



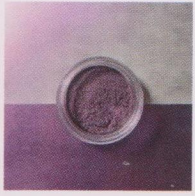
Contextural 3861FeC+
30-195um



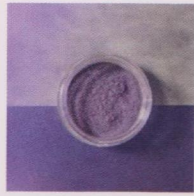
Contextural 3862FeC+
30-195um

Product	INCI	Particle Size
Contextural 2861FeC+	Synthetic Fluorophlogopite+Titanium Dioxide (CI 77891)+Silica+Tin Oxide (CI 77861) +Iron Oxides/77499 +Triethoxycaprylsilane	10-40µm
Contextural 2813FeC+	Synthetic Fluorophlogopite+Titanium Dioxide (CI 77891)+Silica+Tin Oxide (CI 77861) +Iron Oxides/77499 +Triethoxycaprylsilane	25-95µm
Contextural 3861FeC+	Calcium Sodium Borosilicate +Titanium Dioxide (CI 77891)+Tin Oxide (CI 77861)+Iron Oxides/77499+Triethoxycaprylsilane	30-195µm
Contextural 3862FeC+	Calcium Sodium Borosilicate +Titanium Dioxide (CI 77891)+Tin Oxide (CI 77861)+Iron Oxides/77499+Triethoxycaprylsilane +PEG-12 Dimethicone	30-195µm

Contextural Carbon Black Series



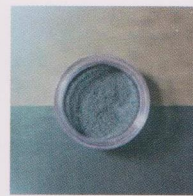
Contextural 2861C+
10-40um



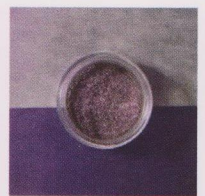
Contextural 2862C+
10-40um



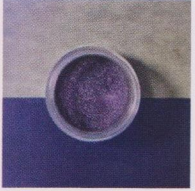
Contextural 2863C+
10-40um



Contextural 2864C+
10-40um



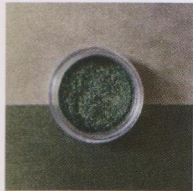
Contextural 2811C+
25-95um



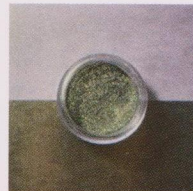
Contextural 2812C+
25-95um



Contextural 2813C+
25-95um



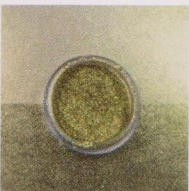
Contextural 2814C+
25-95um



Contextural 2815C+
25-95um

Product	INCI	Particle Size
Contextural 2861C+	Synthetic Fluorphlogopite+Titanium Dioxide(CI 77891)+ Tin Oxide(CI 77861) +Black2(CI 77266) +Silica + Triethoxycaprylsilane	10-40µm
Contextural 2862C+	Synthetic Fluorphlogopite+Titanium Dioxide(CI 77891)+ Tin Oxide(CI 77861) +Black2(CI 77266) +Silica + Triethoxycaprylsilane	10-40µm
Contextural 2863C+	Synthetic Fluorphlogopite+Titanium Dioxide(CI 77891)+ Tin Oxide(CI 77861) +Black2(CI 77266) +Silica + Triethoxycaprylsilane	10-40µm
Contextural 2864C+	Synthetic Fluorphlogopite+Titanium Dioxide(CI 77891)+ Tin Oxide(CI 77861) +Black2(CI 77266) +Silica + Triethoxycaprylsilane	10-40µm
Contextural 2811C+	Synthetic Fluorphlogopite+Titanium Dioxide(CI 77891)+ Tin Oxide(CI 77861) +Black2(CI 77266) +Silica + Triethoxycaprylsilane	25-95µm
Contextural 2812C+	Synthetic Fluorphlogopite+Titanium Dioxide(CI 77891)+ Tin Oxide(CI 77861) +Black2(CI 77266) +Silica + Triethoxycaprylsilane	25-95µm
Contextural 2813C+	Synthetic Fluorphlogopite+Titanium Dioxide(CI 77891)+ Tin Oxide(CI 77861) +Black2(CI 77266) +Silica + Triethoxycaprylsilane	25-95µm
Contextural 2814C+	Synthetic Fluorphlogopite+Titanium Dioxide(CI 77891)+ Tin Oxide(CI 77861) +Black2(CI 77266) +Silica + Triethoxycaprylsilane	25-95µm
Contextural 2815C+	Synthetic Fluorphlogopite+Titanium Dioxide(CI 77891)+ Tin Oxide(CI 77861) +Black2(CI 77266) +Silica + Triethoxycaprylsilane	25-95µm

Contextural Glass Based Iron And Titanium Series



Contextural 3985
10-100um

Product	INCI	Particle Size
Contextural 3985	Calcium Sodium Borosilicate+Titanium Dioxide (CI 77891)+Iron Oxides/77491+Tin Oxide (CI 77861)	10-100µm

Contextural Glass Based Titanium Series



Contextural 3881
10-100um



Contextural 3882
10-100um



Contextural 3885
10-100um



Contextural 3883
10-100um



Contextural 3872
30-150um



Contextural 3891
30-150um



Contextural 3894
30-150um



Contextural 3898
30-150um



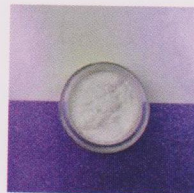
Contextural 3811
40-200um



Contextural 3813
40-200um



Contextural 3814
40-200um



Contextural 3893
40-200um

Product	INCI	Particle Size
Contextural 3881	Calcium Sodium Borosilicate +Titanium Dioxide (CI 77891) +Tin Oxide (CI 77861)	10-100µm
Contextural 3882	Calcium Sodium Borosilicate +Titanium Dioxide (CI 77891) +Tin Oxide (CI 77861)	10-100µm
Contextural 3885	Calcium Sodium Borosilicate +Titanium Dioxide (CI 77891) +Tin Oxide (CI 77861)	10-100µm
Contextural 3883	Calcium Sodium Borosilicate +Titanium Dioxide (CI 77891) +Tin Oxide (CI 77861)	10-100µm
Contextural 3872	Calcium Sodium Borosilicate+Titanium Dioxide (CI 77891) +Tin Oxide (CI 77861)	30-150µm
Contextural 3891	Calcium Sodium Borosilicate+Titanium Dioxide (CI 77891) +Tin Oxide (CI 77861)	30-150µm
Contextural 3894	Calcium Sodium Borosilicate+Titanium Dioxide (CI 77891) +Tin Oxide (CI 77861)	30-150µm
Contextural 3898	Calcium Sodium Borosilicate+Titanium Dioxide (CI 77891) +Tin Oxide (CI 77861)	30-150µm
Contextural 3811	Calcium Sodium Borosilicate+Titanium Dioxide (CI 77891) +Tin Oxide (CI 77861)	40-200µm
Contextural 3813	Calcium Sodium Borosilicate+Titanium Dioxide (CI 77891) +Tin Oxide (CI 77861)	40-200µm
Contextural 3814	Calcium Sodium Borosilicate+Titanium Dioxide (CI 77891) +Tin Oxide (CI 77861)	40-200µm
Contextural 3893	Calcium Sodium Borosilicate+Titanium Dioxide (CI 77891) +Tin Oxide (CI 77861)	40-200µm