

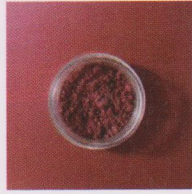
# ColorMica Series

Fine powder, high concealer, matte texture, suitable for color adjustment of all formulations, and stable formulation of water-based system.



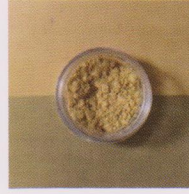
**ColorMica Red Brown S0115**

1-15um



**ColorMica Wine Red S0115**

1-15um



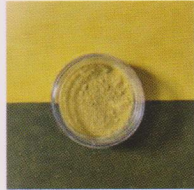
**ColorMica Golden S0115**

1-15um



**ColorMica Iron Blue S0115**

1-15um



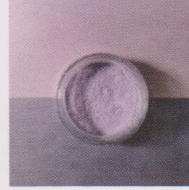
**ColorMica Yellow S0115**

1-15um



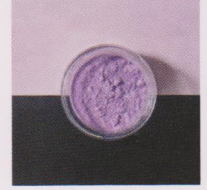
**ColorMica Orange S0115**

1-15um



**ColorMica Pearl Violet S0115**

1-15um



**ColorMica Violet S0115**

1-15um



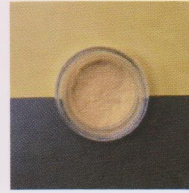
**ColorMica Black8 S0115**

1-15um



**ColorMica Iron Black S0115**

1-15um



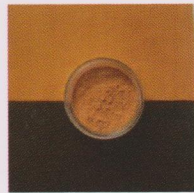
**ColorMica 0115ST3**

1-15um



**ColorMica Iron Black S0110**

1-10um



**ColorMica Orange S0110**

1-10um

Product	INCI	Particle Size
ColorMica Red Brown S0115	Synthetic Fluorphlogopite+Iron Oxides/77491 (CI 77491)	1-15 µm
ColorMica Wine Red S0115	Synthetic Fluorphlogopite+Iron Oxides/77491 (CI 77491)	1-15 µm
ColorMica Golden S0115	Synthetic Fluorphlogopite+ Titanium Dioxide (CI 77891)+Iron Oxides/CI77491 (CI 77491)	1-15 µm
ColorMica Iron Blue S0115	Synthetic Fluorphlogopite+Titanium Dioxide (CI 77891)+ Ferric Ferrocyanide(CI 77510)	1-15 µm
ColorMica Yellow S0115	Synthetic Fluorphlogopite+Iron Oxides/77492(CI 77492) +Triethoxycaprylsilane	1-15 µm
ColorMica Orange S0115	Synthetic Fluorphlogopite+Titanium Dioxide (CI 77891)+Iron Oxides/CI77491(CI 77491)	1-15 µm
* ColorMica Pearl Violet S0115	Synthetic Fluorphlogopite+ Titanium Dioxide (CI 77891)+ Tin dioxide(CI 77861) +Manganese Violet (CI 77742)+Triethoxycaprylsilane	1-15 µm
ColorMica Violet S0115	Synthetic Fluorphlogopite+ Manganese Violet (CI 77742) + Triethoxycaprylsilane	1-15 µm
ColorMica Black8 S0115	Synthetic Fluorphlogopite+ Black2(CI 77266)+Triethoxycaprylsilane	1-15 µm
ColorMica Iron Black S0115	Synthetic Fluorphlogopite+Iron Oxides/77499(CI 77499)+PEG-12 Dimethicone	1-15 µm
* ColorMica 0115ST3	Synthetic Fluorphlogopite+ Titanium Dioxide (CI 77891)+Iron Oxides/CI77491 (CI 77491)	1-15 µm
* ColorMica Iron Black S0110	Synthetic Fluorphlogopite+Iron Oxides/77491 (CI 77499)	1-10 µm
* ColorMica Orange S0110	Synthetic Fluorphlogopite+ Iron Oxides/77491 (CI 77491)+Titanium Dioxide (CI 77891)	1-10 µm